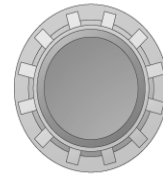
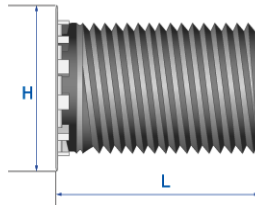




<b>Head Type / Platform Type</b>	Flush Head / Knurled Platform
<b>Material</b>	Stainless Steel
<b>Finish</b>	Plain



H = Head Diameter  
L = Body Length

\*Dimensions in millimeters

Part Number	Thread Size	H max.	Hole Size (+0.08)	Sheet Thickness min.	Dist. C/L hole to edge min.	Hole in mating part max.	Tightening Torque(Nm) rec.							
TGFKSP-020***	M2	3.35	1.96	1.0	4.8	2.6	0.20							
TGFKSP-025***	M2.5	4.05	2.47	1.0	5.3	3.1	0.41							
TGFKSP-030***	M3	4.70	2.97	1.0	5.5	3.6	0.84							
TGFKSP-035***	M3.5	5.30	3.48	1.0	6.4	4.1	1.02							
TGFKSP-040***	M4	6.00	3.96	1.0	7.0	4.6	1.92							
TGFKSP-050***	M5	6.70	4.98	1.0	7.0	5.6	3.84							
TGFKSP-060***	M6	8.20	5.97	1.5	8.0	6.6	8.02							
TGFKSP-080***	M8	9.90	7.97	2.0	9.5	8.6	13.50							
Thread Size	Available Lengths(L)													
M2	6	8	10	12	14	15	16	18	20					
M2.5	6	8	10	12	14	15	16	18	20					
M3	6	8	10	12	14	15	16	18	20	25	30			
M3.5	6	8	10	12	14	15	16	18	20	25	30			
M4	6	8	10	12	14	15	16	18	20	25	30			
M5	6	8	10	12	14	15	16	18	20	25	30	40		
M6		8	10	12	14	15	16	18	20	25	30	40	50	60
M8				12	14	15	16	18	20	25	30	40	50	60